

Motor-driven fire damper

of integration to KOOLCOM systems



Comply with regulations UNE-EN 15650, UNE-EN 1366-2, UNE-EN 13501-3 and the CE and NF marking

| Model | Dimensions | Construction details | Installation location | Installation | Classification |
|--|--------------------------------|---|-----------------------|---------------|-------------------------------|
| SCFR - PD  | L: 200 → 800 H: 100 → 600 | d = 150 mm ρ = 1900 kg/m ³ | In wall | Mortar | EI-120 (ve i↔o) S (500 Pa) |
| | L: 200 → 800 H: 100 → 600 | d = 150 mm ρ = 2.000 kg/m ³ | In ceiling/floor slab | Mortar | EI-180 (ho i↔o) S (500 Pa) |
| | L: 200 → 800 H: 100 → 600 | d ≥ 100 mm | Flexible wall | Gypsum plates | EI-120 (ve i↔o) S (500 Pa) |
| SCFR - GD  | L: 850 → 1.500 H: 200 → 800 | d = 150 mm ρ = 1900 kg/m ³ | In wall | Mortar | EI-120 (ve i↔o) S (500 Pa) |
| SFR3K1GT  | L: 200 → 1.500 H: 200 → 800 | d = 150 mm ρ = 1900 kg/m ³ | In wall | Mortar | EI-180 (ve i↔o) S (300 Pa) |
| SCFC - PD  | Ø: 100 → 355 | d = 150 mm ρ = 1900 kg/m ³ | In wall | Mortar | EI-120 (ve i↔o) S (500 Pa) |
| | Ø: 100 → 355 | d = 150 mm ρ = 2.000 kg/m ³ | In ceiling/floor slab | Mortar | EI-180 (ho i↔o) S (500 Pa) |
| | Ø: 100 → 355 | d ≥ 100 mm | Flexible wall | Gypsum plates | EI-120 (ve i↔o) S (500 Pa) |
| SCFC -GD  | Ø: 200 → 800 | d = 150 mm ρ = 2.000 kg/m ³ | In wall | Mortar | EI-180 (ve i↔o) S (300 Pa) |
| | Ø: 400 → 630 | d = 150 mm ρ = 2.000 kg/m ³ | In ceiling/floor slab | Mortar | EI-180 (ho i↔o) S (500 Pa) |

Smoke exhaust dampers

of integration to KOOLCOM systems

Comply with European regulations and comply with the CE and NF marking

| Model | Dimensions | Installation location | Installation | Classification |
|--|----------------------------------|-----------------------|----------------------------------|--|
| SMLD  | L: 2 → 4 slats H: 200 → 1.000 | Smoke exhaust duct | 1366-8 certified vertical duct | EI-120 (ved i↔o) S 1.500 AA multi (500 Pa) |
| SCDC  | L: 200 → 1.200 H: 200 → 800 | Smoke exhaust duct | 1366-8 certified horizontal duct | EI-120 (ved i↔o) S 1.500 AA multi (500 Pa) |

KOOLAIR

series KOOLCOM

Motor-driven
fire damper
monitoring systems



Designed for
Protección Contra Incendios



KOOLAIR

KOOLAIR, S.L.

Calle Urano, 26

Polígono industrial nº2 - La Fuensanta

28936 Mostoles - Madrid - (Spain)

Tel: +34 91 645 00 33

Fax: +34 91 645 69 62

e-mail: info@koolair.com

www.koolair.com



www.koolair.com



TESTING, CONTROL AND MONITORING

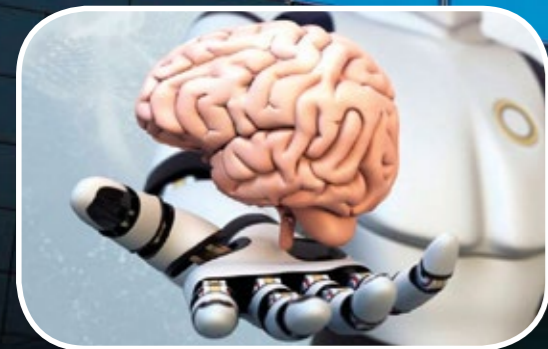
What is the **KOOLCOM** System?

KOOLCOM is an electronic control system for fire dampers that allows the condition and functionality of each fire damper to be periodically and automatically monitored and checked. It can also close the dampers should the fire alarm be activated.



Why use **KOOLCOM**?

- ✓ Lowering the number of casualties in case of a fire.
- ✓ Reducing maintenance time and costs.
- ✓ Monitoring of the damper state on a real-time basis.
- ✓ Centralised damper management via a **BMS** and/or **graphic console**.
- ✓ Damper test programming.
- ✓ Turning exhaust fans **ON** in case of a fire.



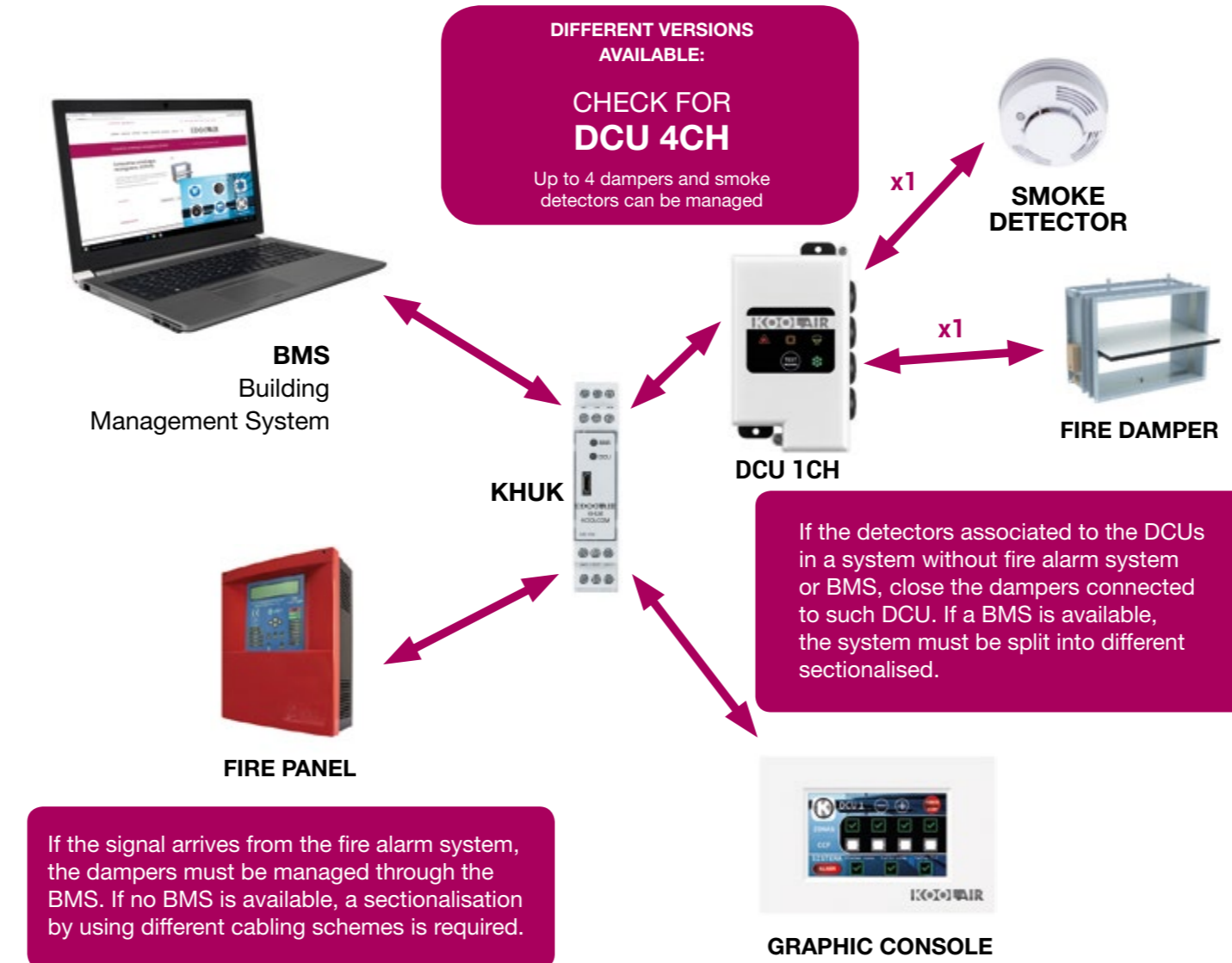
KOOLCOM

Increasing the installation safety



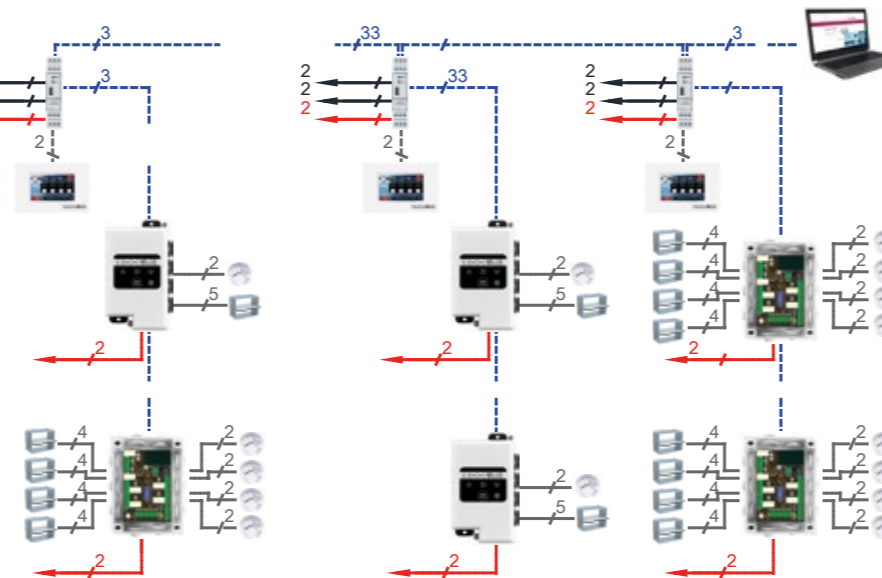
KOOLCOM

Operation and system overview diagram



- KHUK 24V supply. DCUs 24V/230V supply.
- Cable Modbus.
- KHUK alarm and reset input.
- Damper motor power supply and state contacts
- Smoke detector alarm input.

GENERAL SCHEMATIC DIAGRAM

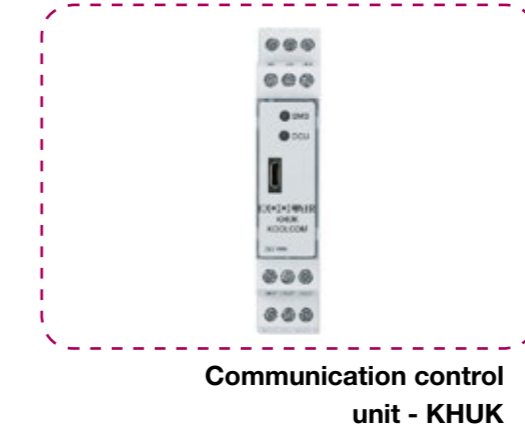


SYSTEM POSSIBILITIES

- Management:
1-247 KHUK
1-32 DCU UNITS FOR EACH KHUK
1-4 DAMPERS FOR EACH DCU
- It can support:
247 KHUK
7.904 DCU
31.616 CCF

FIRE PROTECTION

System components **KOOLCOM**



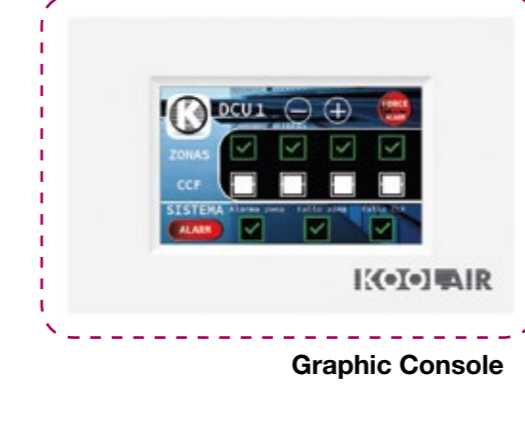
KHUK - KOOLCOM HUB UNIT KOOLAIR
ModBus hub unit which interacts with the fire alarm system and receives an external alarm or issues a detected alarm.

- ✓ Connections for up to 32 DCUs.
- ✓ Possibility of being connected to a BMS.
- ✓ High data communication speed.



DCU - DAMPER CONTROL UNIT
ModBus communicated device that allows the motor-driven fire dampers connected to the system to be commanded and monitored.

- ✓ Management of up to 4 dampers.
- ✓ Up to 4 smoke detectors can be installed.
- ✓ Built-in pushbutton for manual test and reset.



GRAPHIC CONSOLE
It allows the DCU units connected to the associated KHUK to be monitored and commanded, thus making monitoring and control of the fire dampers easy.

- ✓ Displaying the overall system status.
- ✓ Displaying each DCU.
- ✓ Programming weekly tests.

DISPLAYING OF ALARMS

The alarm is shown both in the DCUs and the graphic consoles involved.

