

The KOOLAIR smoke exhaust dampers comply with European regulations and comply with the CE and NF marking.

Product standard (defines the general characteristics of the product)	EN 12101-8
Testing standard (defines the tests to determine that the product performs its function)	EN 1366-10
Classification standard (classifies the product according to its fire resistance)	EN 13501-4

Declared smoke exhaust features

Model	Dimensions	Mounting location	Installation	Classification
SMLD CE NF	L: 2 → 4 slats H: 200 → 1000	Smoke exhaust duct	1366-8 certified vertical duct	EI-120 (ved i↔o) S 1500 AA multi (500 Pa)
CEVH CE NF	L: 400 → 1100 H: 400 → 1100	Smoke exhaust duct	1366-8 certified vertical duct	EI-120 (ved i↔o) S 1500 AA multi (500 Pa)
SCDC CE NF	L: 200 → 1200 H: 200 → 800	Smoke exhaust duct	1366-8 certified horizontal duct	EI-120 (ved i↔o) S 1500 AA multi (500 Pa)

RPK protection grille for use in smoke exhaust dampers SMLD and CEVH



KOOLAIR

KOOLAIR S.A.
 Polígono Industrial 2. La Fuensanta
 28936 Móstoles (Madrid). España
 Tel: +34 91 645 00 33
 Fax: +34 91 645 69 62
 www.koolair.com
 info@koolair.com



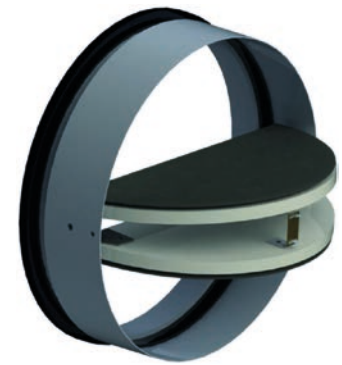
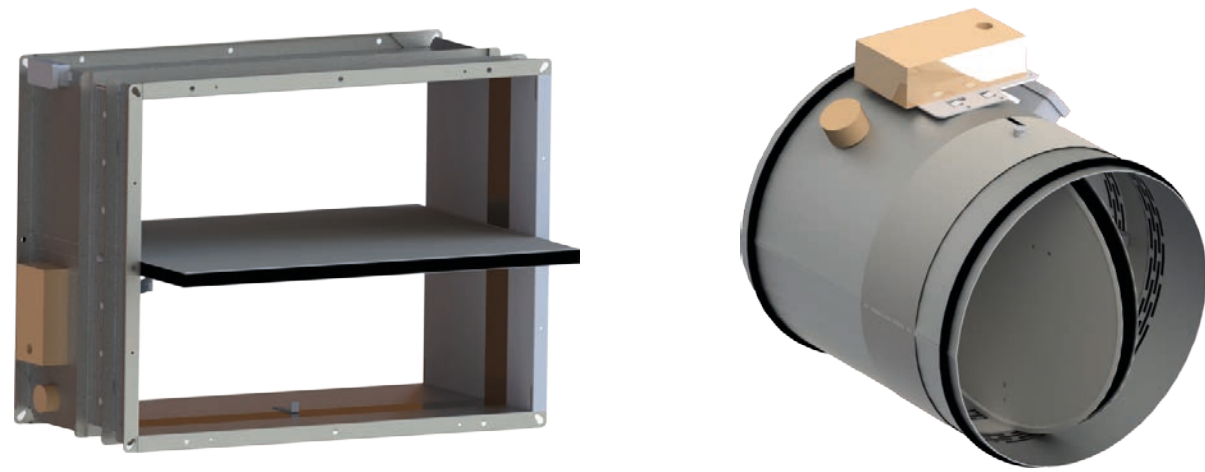
KOOLAIR

Fire protection



Fire Dampers

Declared fire resistance features



The KOOLAIR Fire Dampers comply with European regulations and CE and NF marking requirements.

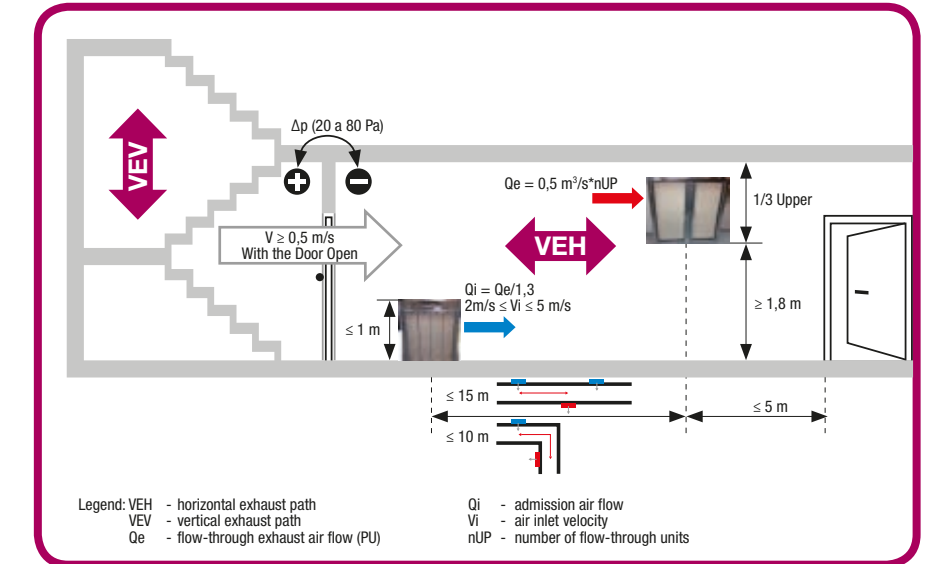
Model	Dimensions	Construction details	Installation location	Installation	Classification
SCFR - PD CE NF	L: 200 → 800 H: 100 → 600	d = 150 mm ρ = 1900 kg/m³	In wall	Mortar	EI-120 (ve i↔o) S (500 Pa)
	L: 200 → 800 H: 100 → 600	d = 150 mm ρ = 2000 kg/m³	In ceiling/floor slab	Mortar	EI-180 (ho i↔o) S (500 Pa)
	L: 200 → 800 H: 100 → 600	d ≥ 100 mm	Flexible wall	Gypsum plates	EI-120 (ve i↔o) S (500 Pa)
SCFR - GD CE NF	L: 850 → 1500 H: 200 → 800	d = 150 mm ρ = 1900 kg/m³	In wall	Mortar	EI-120 (ve i↔o) S (500 Pa)
SFR3K1GT CE	L: 200 → 1500 H: 200 → 800	d = 150 mm ρ = 1900 kg/m³	In wall	Mortar	EI-180 (ve i↔o) S (300 Pa)
SCFC - PD CE NF	∅: 100 → 355	d = 150 mm ρ = 1900 kg/m³	In wall	Mortar	EI-120 (ve i↔o) S (500 Pa)
	∅: 100 → 355	d = 150 mm ρ = 2000 kg/m³	In ceiling/floor slab	Mortar	EI-180 (ho i↔o) S (500 Pa)
	∅: 100 → 355	d ≥ 100 mm	Flexible wall	Gypsum plates	EI-120 (ve i↔o) S (500 Pa)
SCFC - GD CE NF	∅: 200 → 800	d = 150 mm ρ = 2000 kg/m³	In wall	Mortar	EI-180 (ve i↔o) S (300 Pa)
	∅: 400 → 630	d = 150 mm ρ = 2000 kg/m³	In ceiling/floor slab	Mortar	EI-180 (ho i↔o) S (500 Pa)
BDK CE	∅: 100 → 200	d = 150 mm ρ = 1900 kg/m³	In wall	Mortar	EI-60 (ve i↔o) S (300 Pa)
	∅: 100 → 200	d ≥ 100 mm	Flexible wall	Gypsum plates	EI-120 (ve i↔o) S (300 Pa)

SYSTEM KOOLCOM

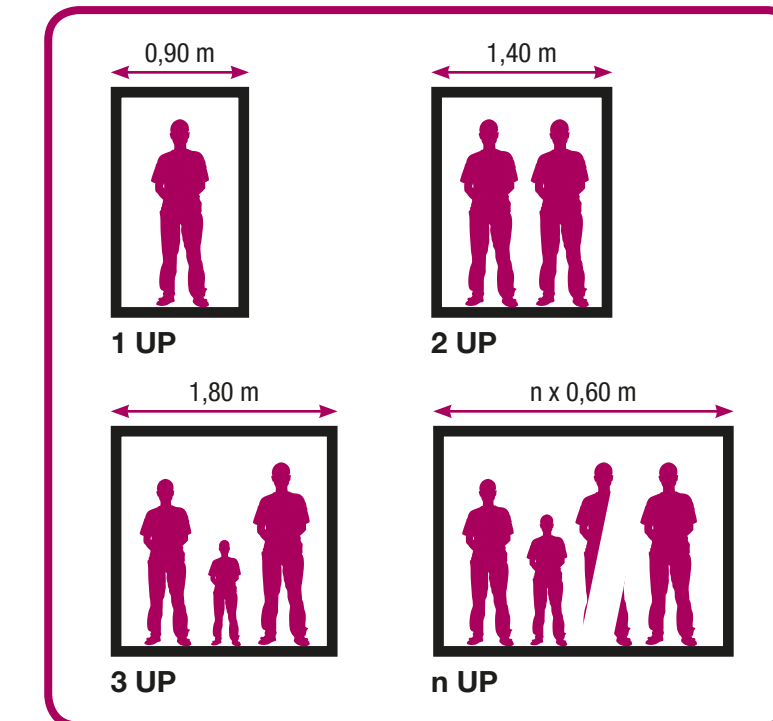
Available motor-driven fire damper and smoke exhaust monitoring systems.

Smoke Exhaust Dampers

Active protection principles: Smoke exhaust



Design and sizing



The exhaust paths have a minimum width, based on the “flow-through unit” (PU) with a value that ranges from 0.9 m, 1.4 or 1.8 m, depending on whether the exhaust paths are one, two or more flow-through units.